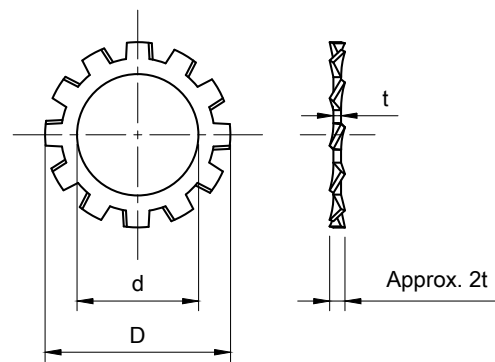
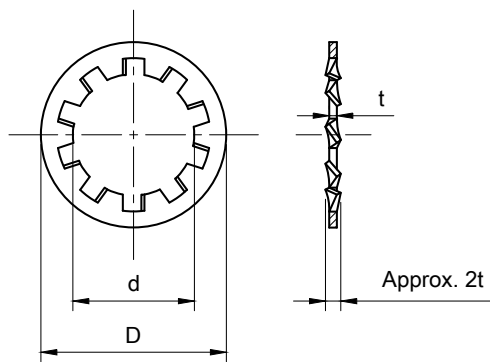


Toothed Lock Washer

JIS B 1251

Internal type (AW)

External type (BW)



Unit : mm

Size-No.		Screw size		d		D		t		Number of teeth	
Internal	External	m/m	inch	Basic	Tol.	Basic	Tol.	Basic	Tol.	Internal	External
AW- 2	BW- 2	2	-	2.2	+0.2 0	4.8	0 -0.3	0.3	±0.025	7	8
2.3	2.3	2.3	-	2.5		5.3		0.3		7	8
2.5	2.5	2.5 (2.6)	-	2.7		5.7		0.3		7	8
3	3	3	-	3.2		6.5		0.45		7	8
3.5	3.5	3.5	-	3.7		7.5		0.45		8	8
4	4	4	-	4.3		8.5		0.45		8	8
4.5	4.5	4.5	-	4.8		9.5		0.5		8	8
5	5	5	-	5.3		10		0.6		8	10
6	6	6	-	6.4		11		0.6		9	12
7	-	7	-	7.4		+0.3 0		13		0.8	10
8	8	8	-	8.4	15	0.8	9	12			
3/8	3/8	-	3/8	9.8	17.5	0.9	9	12			
10	10	10	-	10.5	18	0.9	9	12			
7/16	7/16	-	7/16	11.4	19.5	0.9	10	12			
12	12	12	-	12.5	+0.4 0	21	1	10	12		
1/2	1/2	-	1/2	13	22.5	1	10	12			
14	14	14	-	14.5	23	1	10	12			
16	16	16	5/8	16.5	26	1.2	12	14			
18	18	18	-	19	29	1.2	12	14			
3/4	3/4	-	3/4	19.6	32	1.2	12	14			
20	20	20	-	21	+0.5 0	32	1.4	12	14		
22	22	22	7/8	23	35	1.4	14	16			
24	24	24	-	25	38	1.6	14	16			
1"	1"	-	1"	26	41	1.6	14	16			

• Material = carbon steel

Hardness = HRC40~50

Finish = Zinc plating